

# Smart Electrical Panel Solutions

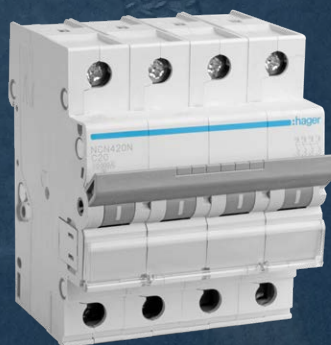
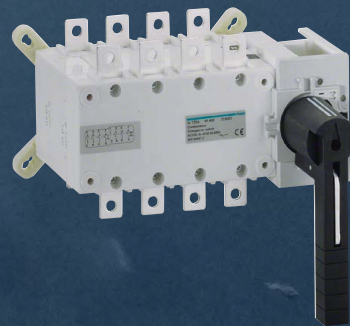
:hager



# Complete Panel Solution Under One Roof

Hager range of Switchgear products are developed considering energy efficiency needs along side unparalleled performance.

Hager Air Circuit Breaker, Moulded Case Circuit Breaker, Motor Control Product range and source transfer range of products ensures unmatched performance of your panel.





# Air Circuit Breakers



**hw** range of ACBs provides safe and reliable power distribution for low voltage electrical networks. It features high breaking capacity with intelligent microprocessor based protection releases.

## Technical characteristics:

- Conforms to IEC 60947-2
- Current Range: 630A-5000 A in 3 frame sizes
- Breaking Capacity: 50, 65, 85, & 100KA
- Rated Voltage: 690V
- Insulation Voltage: 1000V
- Impulse Voltage: 12KV
- 3 kind of Releases (OCR): Basic, Current, Energy

## 01

### Intelligent OCR

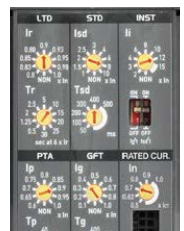
LSIGN protection, LCD display, pretrip alarm, fault recording, remote reset. Signal indication LED PTA/LSI/GF/COM.



## 02

### Flexible protection

Can switch ON/OFF LSIGN and thermal memory separately.



## 03

### Easy communication

To build up communication network. Communication module integrated in OCR.



## 04

### Easy maintenance

Event record 200, fault record 250 (reserved for ever), OCR checker tool.



## 05

### Flexible terminal connection

Horizontal/Vertical terminal rotate at 90° to make it easier for panel builder to mount on busbars. For frame A up to 1600A and frame B up to 3200A.



## 06

### Wide range of accessories

Including: arc shield, phase barrier, temperature sensor, dust cover (IP54)



# Moulded Case Circuit Breakers



Hager range of MCCBs provide safe and easy solution for low voltage electrical circuit protection.

## Technical characteristics:

- Conforms to IEC 60947-2
- Current Range: 16A to 1600A 3pole and 4pole
- Frame sizes: x/P160, x/P250, P630, h1000
- Breaking capacity (Icu): 18, 25, 40, 50kA
- Thermal magnetic and electronic trip units
- Current limiting type (Cat A)
- Complete range of accessories
- International certification and approvals

## 01

### Secure screw

The quarter-turn auxiliary access system saves time when installing the product. The secure screw offers additional comfort.



## 02

### Hinged front cover

The front cover offers multiple advantages. It is mounted on hinges. It remains integral with the case once opened, preventing incorrect refitting.



## 03

### Auxiliary window

The type of auxiliaries can be seen directly through the windows on the front panel, without removing the cover.



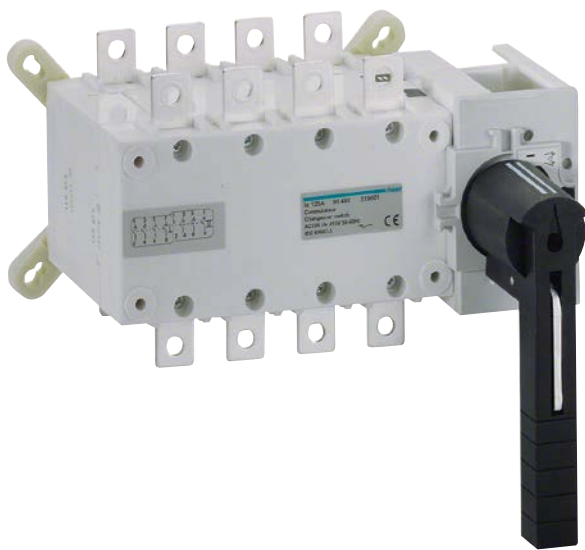
## 04

### Integrated padlock

The handle can be directly locked with no need for extra accessories.



# Manual Changeover Switches



MCOS allows manual switch, changeover switch or on load power circuit permutation.

## Technical characteristics:

- Complies with IEC 60947-3
- Rating: 63A - 1600A
- Suitable for AC23
- Lockable on position: O

### 01

Quick switching operation by spring action with sweeping silver contacts



### 02

Compact dimension with back to back terminals



### 03

3 stable position changeover with padlocking at zero position for maintenance on direct & extended handle



### 04

Site mountable wide range of accessories based on application needs



# Automatic Transfer Switches



ATS offers switching between mains and genset during power failure. It also offers auto genset start along with safe and reliable changeover operation as an additional feature.

## Technical characteristics:

- Conforms IEC 60947-3
- Rating: 125A - 1600A
- Suitable for AC23A / AC23B
- Lockable on position: O

**01**

Padlocking facility in zero position and manual mode



**02**

Line load reversibility



**03**

Emergency manual operation by removable handle



**04**

Position indicator



**05**

Power ON and Manual override indicator



**06**

Plug-in terminals



# Power Contactor and Overload Relay



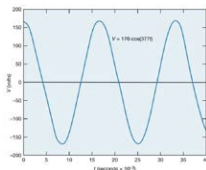
01

Integrated Padlocking for LOTO implementation



02

Capacity to withstand voltage fluctuations through wide Operating band



# Motor Protection Circuit Breaker



03

Manual and Auto reset option



04

Low VA burden coil reducing control transformer size



Hager range of Motor Protection and control devices offers easy and efficient way to control and protect your system.

## Technical characteristics:

### Contactor

- Complies with IEC 60947-4-1
- Rating: 9A - 630A
- No. of poles: 3 Pole

### Relay

- Class 10 Tripping class relay
- Phase Loss protection, temperature compensation, test provision
- Electrical separate inbuilt NO & NC contact

## Technical characteristics:

- Conforms IEC 60947-4-1
- Rating: 0.16A - 80A
- Integrated Padlock facility
- Available in 3P version



# Miniature Circuit Breakers (MCB) and Residual Current Devices (RCD)



Comprehensive range offering reliable solution for protection of installations against overcurrent and earth leakage

## 01 IP2x

All the products are IP2x. No live part is accessible on the product. The safety is fully improved while wiring and installing products.



## 02 Stick on bus bar

The bus bar clicks on mechanically into the housing of the modular protective devices (MCBs, RCCBs, RCBOs). Both hands are free for the simultaneous insertion of the ingoing cables and the fixing of the terminals.



## 03 Metal Din clip

Safe mechanical fixing of the devices on the bus bar DIN clip with "parking position": The devices are fixed on the din rail, but are slideable. By a simple "click" the clip can be closed and the devices are fixed.



## 04 RCCB/RCBO indicator

This flag indicator informs that the switch has tripped due to an earth fault.

- Normal Condition
- Trip on earth fault



### Technical characteristics:

#### MCB

- upto 125A in 1P, 2P, 3P, 4P in B, C and D curve
- Breaking capacity: 10kA

#### RCBO

- upto 63A in 2P and 4P
- Trip class : AC and HI
- Breaking capacity: 6kA and 10kA
- ISI Marking

### Advantages for you

- Positive Contact Isolation ensuring complete protection to user
- Ergonomically designed toggle for comfort switching
- Laser marking to ensure permanent information
- Front product labeling for displaying of load information
- Energy Limiting Class 3 to ensure low let through energy to limit thermal & mechanical stress on cables
- Direct mounting of wide range of accessories like OV, UV, ST, AX, AL, OV + UV release

## Plug & socket outlets



Insulated / Metal-clad plug & socket outlets for supplying specific loads.

### Technical characteristics:

- Conforms to IS 8623
- Rating: SPN – 10A, 20A & 32A. TPN – 32A & 63A
- Mounting – Surface / flush mounting
- IP category – IP30 for metal clad unit.  
IP54 for insulated P&S (IP30 for enclosure)
- Material – CRCA sheet steel
- Color – RAL 9010, matt finish

## Metal Plug & socket outlet accessory



Metal-clad plug & socket outlets for supplying specific loads.

### Technical characteristics:

- Conforms to IS8804
- Rating - 10A - 63A
- Range - Plugs, Sockets
- Material - Cast aluminium alloy
- Color - Blue for 250VAC. Red for 440VAC

### Features & benefits

- Plastic caps for socket
- Ensures human safety
- Non-corrosive die cast aluminium alloy with robust design

# Always near

## North

Delhi & NCR  
Haryana  
Uttar Pradesh  
Punjab  
Chandigarh  
Jammu & Kashmir  
Rajasthan

## East

West Bengal  
Orissa  
Jharkhand  
Assam

## West

Maharashtra  
Gujarat  
Madhya Pradesh  
Chattisgarh

## South

Tamilnadu  
Karnataka  
Kerala  
Telangana  
Andhra Pradesh

## Our network to serve you better

- 350+ Authorised Channel Partners
- 35+ System Integrators
- 25+ Service Centers



We are also there for you 24 hours:

[hager.co.in](https://hager.co.in)



**Hager Electro Private Limited**

Global Industrial Park  
G. No. 185, Alandi - Ahmednagar Road,  
Phulgaon, Pune-412216  
India

Tel: +91 20 66784500  
Toll free no.: 1800 103 5440  
hagerwow@hager.co.in  
**hager.co.in**

**Mumbai Sales Office:**

WeWork Zenia Building  
4th Floor, Office No. 102  
Hiranandani Estate Road  
Hiranandani Estate, Thane West  
Thane 400607  
India

Tel: +91 9607994214

**Delhi Sales Office:**

We are shifting to new premises  
Contact: +91 9717792555  
Email: ashwini.singh@hager.com

**Kolkata Sales Office:**

Office # 506, 5th Floor  
Shantiniketan Building  
8, Camac Street  
Kolkata-700017  
India

**Bengaluru Sales Office:**

WeWork Galaxy  
# 02A129, 43 Residency Rd  
Bengaluru-560025  
India

Tel: +91 80 44451100