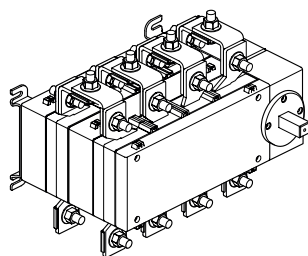


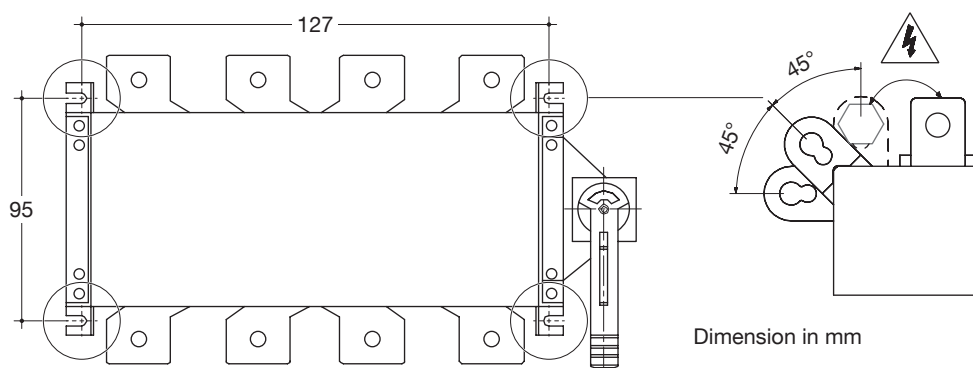
(EN) Change over switch 4P
63A 100A

6LE000941Ac



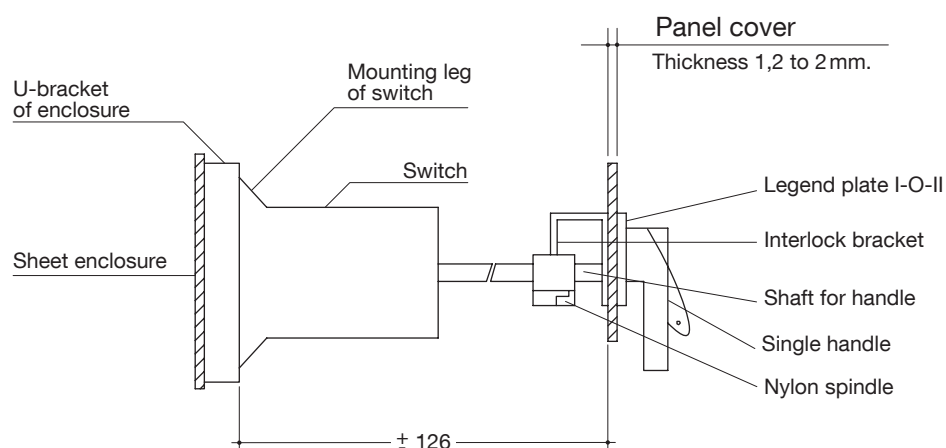
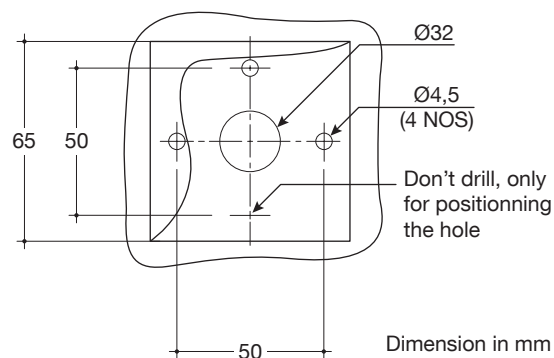
HI403I, HI405I

Installation and adjustment of open execution



Installation and adjustment of enclosed execution

Door drilling for interlock assy. mounting



Fixing of door interlock mechanism

Change over switch

Screw to be removed and use here

Interlock bracket without screws to be used in ORIGINAL POSITION

CH M4 x 15 screw

Star washer M4

Single handle

Position label

CSK screw M4 x 15

Interlock assy.

Enclosure cover

Interlock bracket

Use CSK M4 x 15 screw

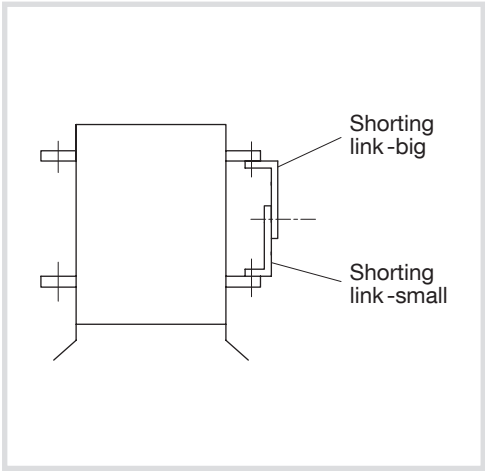
Star washer M4

Nylon spindle HEX/SQ. -63 A

Shaft

Switch

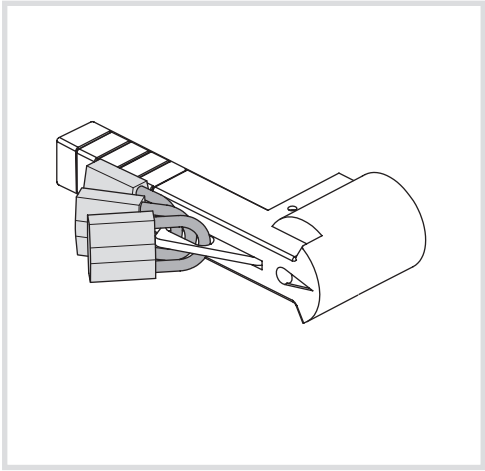
Instruction for connection



1. Shorting links are pre-mounted at works **arrangement should not be altered.**
2. If arrangement altered, then re-mount as shown in the diagram.
- Ensure
- a. Shorting links are **perfectly lap joined.**
- b. **No visible air gap between joints on contact surfaces. Air gap causes localized sparks and burns contacts.**
- c. Bus bars / cable connections **must have natural radius** at switch termination end.
- d. External connection **should not exert pressure on fixed terminals.**
- e. Common outgoing feeders **are connected to bolt.**
- f. Required torque for tightening connecting nut and bolts, refer table given below

Torque table						
Srew Size	M5	M6	M8	M10	M12	M14
Min. Torque in Nm	2,4	4,5	8,3	20	40	45
Max. Torque in Nm	3	5,4	13	26	45	50

Instruction for padlocking



Connection capacity	HI403I	HI405I	Torque value (N.m)
Min Cu cable (mm²) / Bus bar size (mm)	16	25	Min 4,5
Min Al cable (mm²) / Bus bar size (mm)	25	25x2	Max 5,4